

XBLUE Networks 802.11n WiFi Adapter



Revision Date	Version	Supersedes	Description
January 2012	Version 1.0		Initial Release

Reproduction, publication, or duplication of this manual, or any part thereof, in any manner, mechanically, electronically, or photographically, is strictly prohibited.

© Copyright 2011 by XBLUE Networks, LLC All rights reserved

Documentation disclosure

The information contained in this document is subject to change without notice and should not be construed as a commitment by XBLUE Networks, LLC. The information contained herein is supplied without representation or warranty of any kind. XBLUE Networks, reserves the right, without notice, to make changes to the equipment, equipment design, and documentation as advances in engineering and manufacturing methods warrant, and assumes no responsibility and shall have not liability of any kind arising from the supply or use of this document or the material contained herein.

Warning: This documented information is designed to assist in the installation of the new XBLUE products. XBLUE networks has done its best to give adequate warnings and cautions to advise both technical and non-technical individuals, but it is very important to use common sense when installing all electrical equipment.

- The use of this system may result in local, long distance, Internet access or data transfer charges, which are the sole responsibility of the user/owner of the equipment.
- Wireless access has been added for convenience, however, XBLUE does not warrant or guarantee, written or implied, that the wireless will work in every location. It is the responsibility of the owner to enable security to stop unwanted access to the network.

Copyright and Trademark Notice

All right reserved. No part of this publication may be reproduced, transmitted, transcribed, stored in retrieval system, photographically or translated into any language or computer language, in any form or by any means, electronic, mechanical, magnetic, optical, chemical, manual or otherwise, without the prior written permission of XBLUE Networks, LLC.

Windows 98/NT/2000/XP/Windows7™ and Internet Explorer™ are registered trademarks of Microsoft Corporation. All other company, brand and product names, like Netscape Navigator™, Google Chrome™ are trademarks or registered trademarks of their respective owners.

Regulatory Information

This equipment has been tested and found to comply with the limits of a Class B digital device, pursuant to Part 15 of the FCC Rules. These limits are designed to provide reasonable protection against harmful interference in a residential (and business) setting. This product generates, uses and can radiate radio frequency energy and, if not installed and used as directed, it may cause harm interference to radio communications. However, there is no guarantee that interference will not occur in a particular installation.

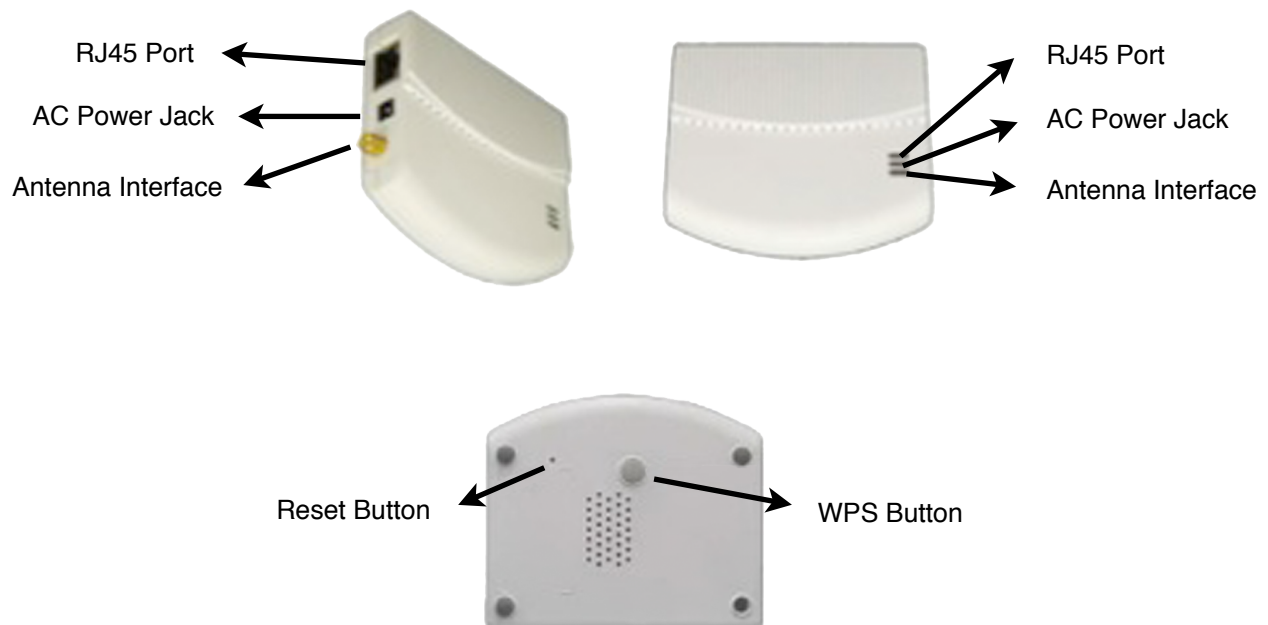
This device has been tested and found to comply with the following European Union directives: EN300 328, EN301 489-1, EN301 489-17, EN50385, EN60950-1.



Contents of Box

47-9005 WiFi Adapter
Quick Start Guide
2dBi Detachable RSMA Antenna
Power Adapter
RJ45 Ethernet Cable

Getting to Know your WiFi Adapter



Connecting the WiFi Wireless Adapter

XBLUE Networks has developed a special WiFi Wireless Adapter that allows you to put your **X-2020** and **X-44** VoIP Telephone even where you do not have access to an Ethernet Cable. The WiFi Wireless Adapter requires an “802.11n” wireless router. If you are using an **XBLUE X-50** system with a software version of 9.6 or newer the WiFi Adapter will automatically connect. No programming needed.

At default the WiFi Adapter will automatically connect to the X-50 system using the following parameters:

SSID = Voice - Hidden

Security = WPA2-PSK

Encryption = AES

WPA Shared Key - eciovrofdiss (ssidforvoice backwards)

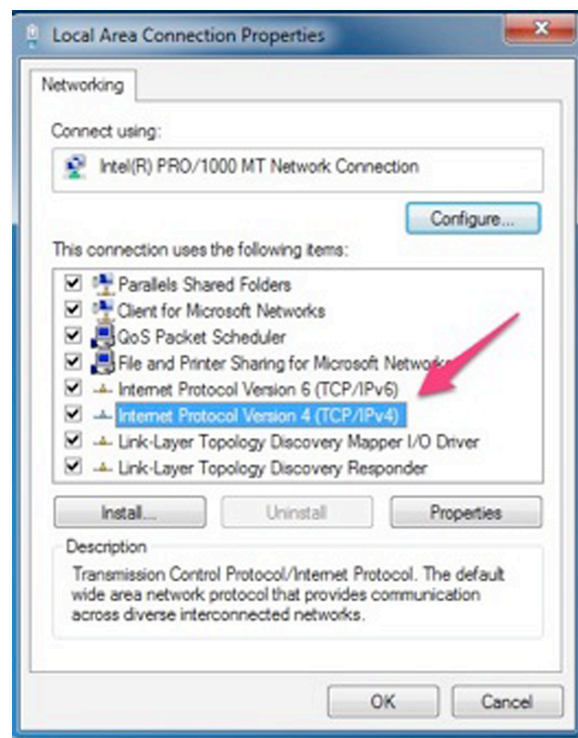
Using these parameters will ensure that your WiFi Adapter always connects to your router correctly.

Connecting the WiFi Router

1. With your PC powered up, make sure to disconnect any connection to your network, and be sure to disable your wireless, if using a computer with a wireless connection. To simplify the installation, place the WiFi Wireless Adapter where you would like to use it and then begin the installation process.
2. Assemble the WiFi Adapter
3. Then plug the provided Ethernet cable into your computer and then plug the WiFi Adapter into your AC Power Outlet to power it up.

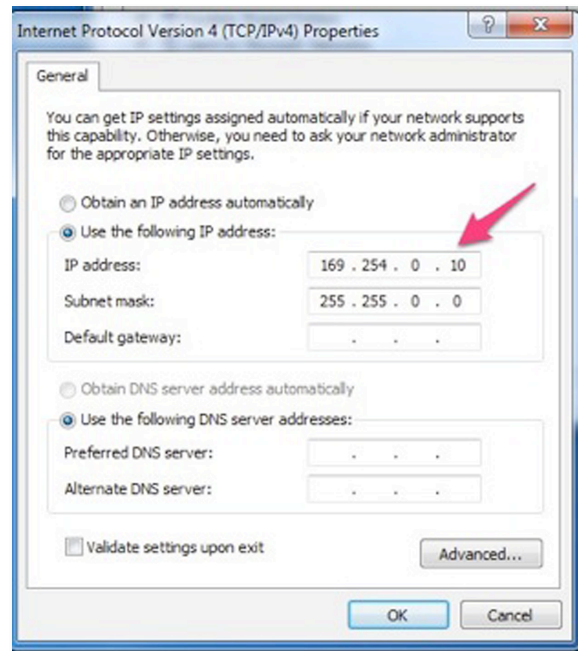
From your Personal Computer

1. From your desktop right click on the “Network” ICON or go to Control Panel, locate and double click on (Windows 7) Network and Sharing (Windows XP) Network Connection. Windows 7 requires an extra step - locate and double click on “Change Adapter Settings” which can be found on the left side of your display.
2. Locate and right click on the “Local Area Connection” for your wired (because the WiFi Adapter is connected to your computer using a cable) Internet connection. Generally, a wireless adapter will say “Wireless” or “WiFi”.
3. Locate and double click on (Windows 7) “Internet Protocol Version 4 (TCP/IPv4)” (Windows XP) Internet Protocol (TCP/IP).



4. Select “Using the Following IP Address”

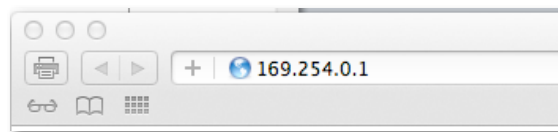
5. Enter – 169.254.0.10 and press “Tab” – this will automatically enter 255.255.0.0 into the “Subnet Mask” field.



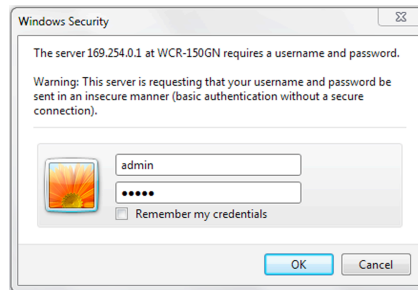
6. Click on “OK” to exit the Version 4 (TCP/IPv4) page
7. Click on “OK” to exit the Local Area Connection Properties page

Note: This procedure forces your PC to use the same network settings as the WiFi Wireless Adapter.

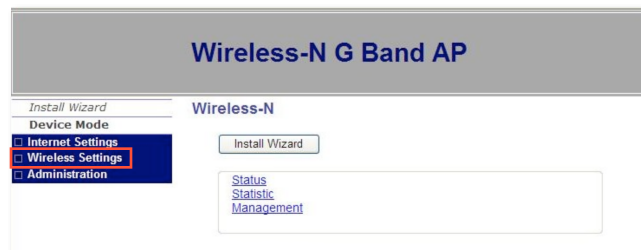
Open your Internet Browser and enter the IP Address of the WiFi Wireless Adapter, which is 169.254.0.1 and press enter



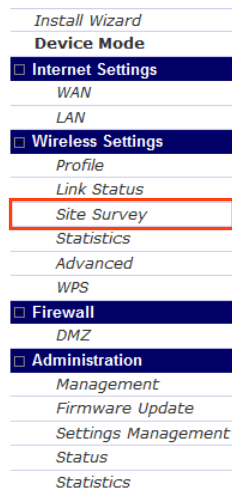
Log into the WiFi Adapter using "admin" as the user name and "admin" as the password



1. Click on Wireless Settings



2. Click on "Site Survey"



3. Locate your wireless router

Wireless-N G Band AP

[Install Wizard](#)

Device Mode

☐ Internet Settings

☒ **Wireless Settings**

[Profile](#)

[Link Status](#)

[Site Survey](#)

[Statistics](#)

[Advanced](#)

[WPS](#)

☒ **Administration**

Station Site Survey

Site survey page shows information of APs nearby. You may choose one of these APs connecting or adding it to profile.

Site Survey								
	SSID	BSSID (MAC Address)	RSSI	Channel	Encryption	Authentication	Network Type	
<input type="radio"/>	MonroeNet2	00:24:01:45:2B:DD	0%	1	WEP	Unknown	Infrastructure	
<input type="radio"/>	HomieAir	00:25:9C:C3:0F:65	39%	2	WEP	Unknown	Infrastructure	
<input type="radio"/>	WLAN1	00:1E:2A:69:A5:CC	0%	6	TKIP; AES	WPA-PSK; WPA2-PSK	Infrastructure	
<input type="radio"/>	MayMay	00:11:95:4D:A8:BB	0%	6	TKIP	WPA-PSK	Infrastructure	
<input checked="" type="radio"/>	BigDog	00:18:39:E5:02:4A	0%	6	TKIP	WPA-PSK	Infrastructure	

Disconnected
Connect
Rescan
Add Profile

4. Enter your router password

SSID

BigDog

Security Policy

Security Mode

WPA-Personal ▼

WPA / WPA2

WPA Algorithms

☒ TKIP ☐ AES

Pass Phrase

••••••••••••••••••••

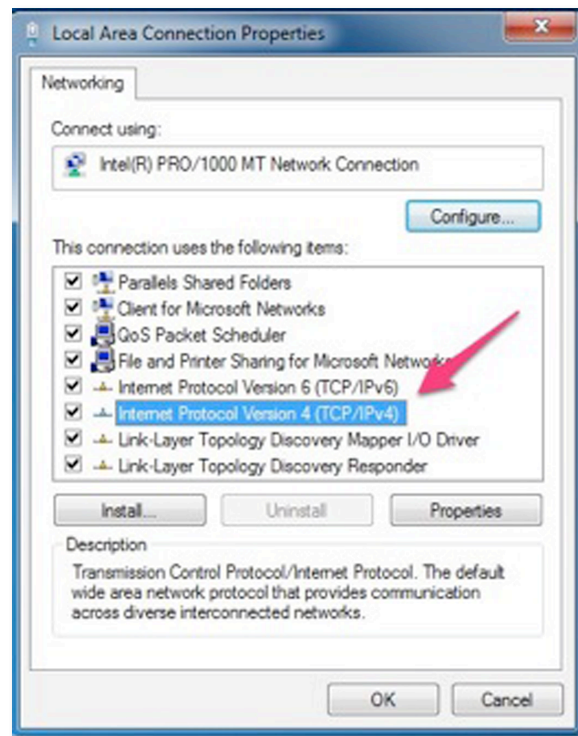
Apply

Cancel

The next step is to reset your computer to use DHCP so that it automatically connects to your existing network.

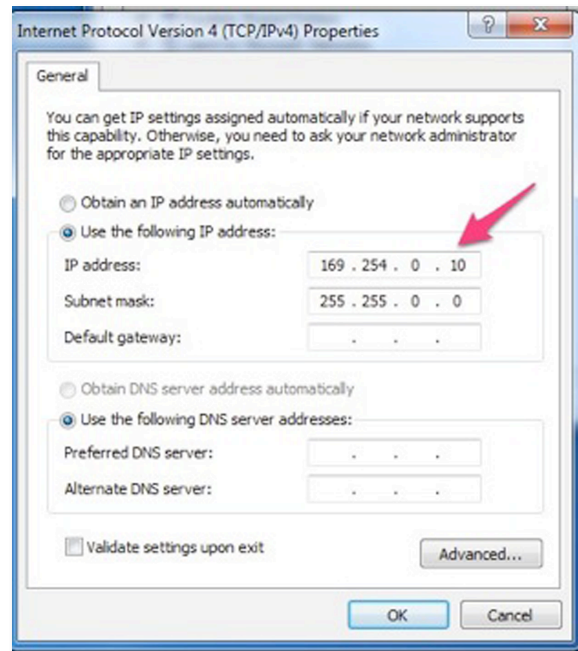
Reconfiguring your Computer's Network Connection

1. From your desktop right click on the "Network" ICON or go to Control Panel, locate and double click on (Windows 7) Network and Sharing (Windows XP) Network Connection. Windows 7 requires an extra step - locate and double click on "Change Adapter Settings" which can be found on the left side of your display.
2. Locate and right click on the "Local Area Connection" for your wired (because the WiFi Adapter is connected to your computer using a cable) Internet connection. Generally, a wireless adapter will say "Wireless" or "WiFi".
3. Locate and double click on (Windows 7) "Internet Protocol Version 4 (TCP/IPv4)" (Windows XP) Internet Protocol (TCP/IP).



4. Select "Using the Following IP Address"

5. Enter – 169.254.0.10 and press “Tab” – this will automatically enter 255.255.0.0 into the “Subnet Mask” field.



6. Click on “OK” to exit the Version 4 (TCP/IPv4) page
7. Click on “OK” to exit the Local Area Connection Properties page Select “Obtain an IP Address Automatically”

Note: Make sure that the computer’s wireless adapter is still disabled.

1. To verify that the WiFi Adapter has been successfully programmed, you should be able to open your Internet Browser and connect to the Internet. If unsuccessful, redo the above steps.
2. If successful – unplug the WiFi’s Ethernet cable from your PC and plug it into your telephone and then power up your telephone.

Note:

The quality of your wireless connection may affect the quality of the voice connection. There is no guarantee, written or implied, that the XBLUE Wireless adapter will work 100 percent of the time.