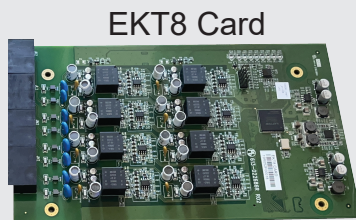


System Components



IP8g IP Telephone



IP9g IP Telephone



DECT Cordless IP Phone & DECT Base



Add-on DECT Cordless IP Phones



Add-on DECT Cordless IP Speakerphone



Items vary depending on bundle purchased. Expansion cards are installed before shipment on some bundles.

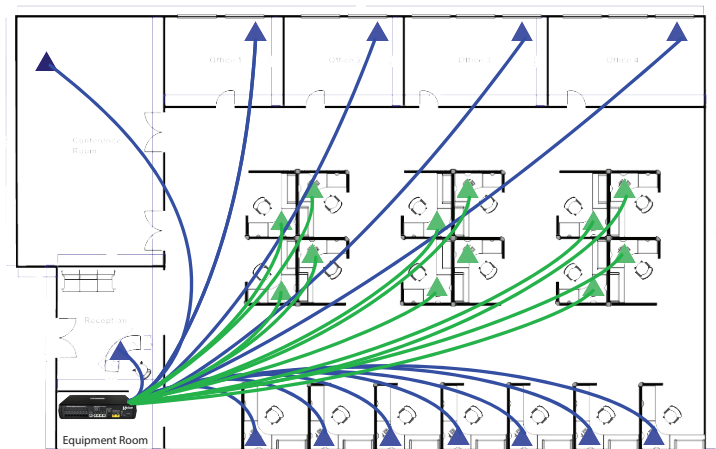
Wiring

Telephone System Wiring/Cabling must be "Home-Runs". This means that each telephone location must have a cable from that location to where the server is located (equipment room).

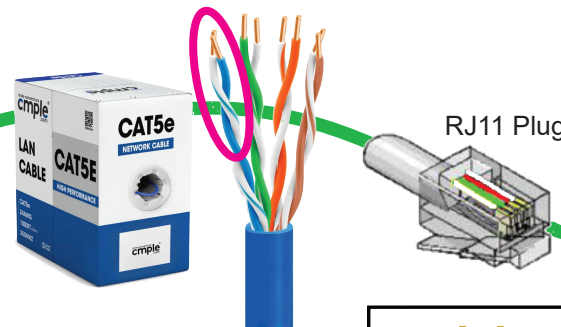
X16^{plus} base configuration has 8 ports for Standard Digital Telephones and allows for expansion to 16 Standard Digital Ports with the optional EKT8 Card.

When the optional VOIP Card is equipped X16^{plus} supports up to 16 IP devices. When both digital and VOIP phones are used the X16^{plus} maximum configuration is 32 phones.

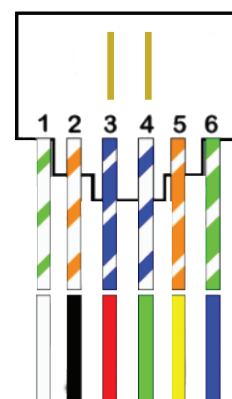
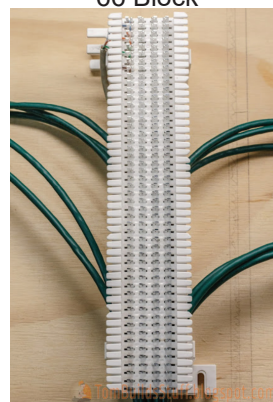
- Standard Digital Telephones (16 max) must be cabled using Cat3,4,5 or 6.
- IP Phones must be cabled using Cat5e, 6 or greater. IP Phones can be installed on existing computer (Ethernet Cat5e or greater) cabling!
- IP Phones can be connected to the server wirelessly using the WIFI Dongle (optional). WIFI should be used only when absolutely necessary. **WIFI is often NOT RELIABLE and is NOT RECOMMENDED** for all telephones.



Connect XD10 (Standard Digital) Telephones



66 Block



There are 6 pin positions in a RJ11. Only the two in the center are used for XD10 Telephones.

Use UTP (Unshielded Twisted Pair) cable. The center two pins of the RJ11 wall jack and plug are used. Connect one "PAIR" to the center two pins at the wall jack. Use the **White/Blue-Blue/White** pair.

- **White/Blue to GREEN**
- **Blue/White to RED**

At the RJ11 plug insert the White/Blue, Blue/White pair into the center two pins and crimp the connector. (Connectors and crimping tool can be purchased at Home Depot.) Then insert the RJ11 into X16^{plus} XBLUE Digital Phone Ports 1-8. Each port operates one XD10. Ports 9-16 are optional.

You may be able to use cables that are already in place. Usually telephone cables are terminated on 66 Blocks (see pic). Determine if the complexity of using existing cables is more than you want to do. If so, you can find telephone cable installers who can help.

To determine if the person is up to the task ask them to describe the "66 Block" to you. If they cannot, pick someone else.

Make sure there are **NO OTHER devices or terminals on the wires that go from the Digital Port to the XD10 telephone!**

